



OAKLAND UNITE: SUMMARY OF EVALUATION FINDINGS AND RECOMMENDATIONS FOR PROGRAM IMPROVEMENTS

February 1, 2016

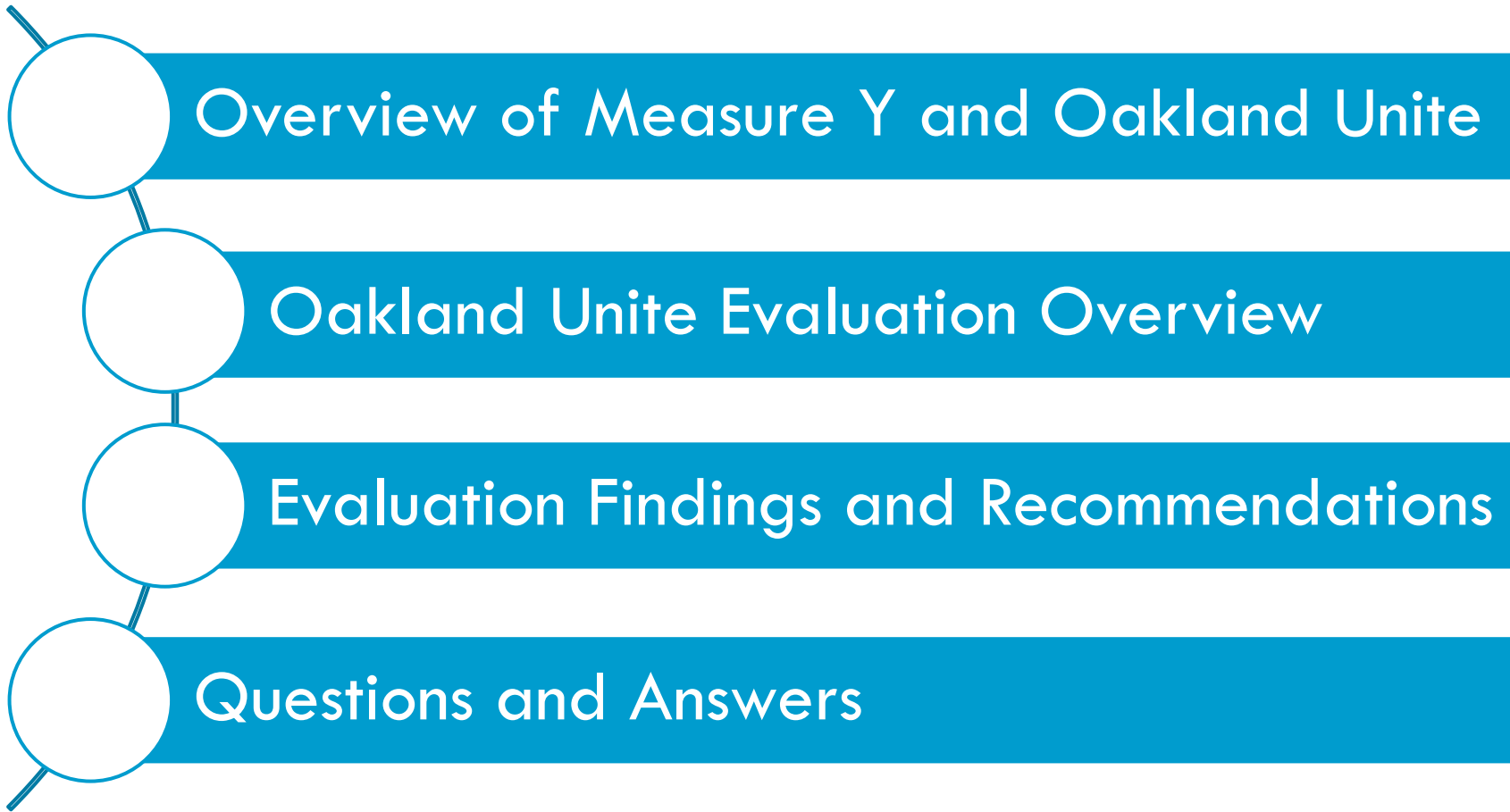
Patricia Marrone Bennett, PhD

Mikaela Rabinowitz, PhD



Agenda

2



3

Measure Y and Oakland Unite

Measure Y Violence Prevention Programs

4

- Oakland's voter-approved Measure Y/Z provides ~\$7-8 million annually to community-based violence prevention efforts to:
 - ▣ Reduce homicides, robberies, burglaries, and gun-related violence; and
 - ▣ Invest in violence intervention and prevention strategies that provide support for at-risk youth and youth adults to interrupt the cycle of violence and recidivism.
- Suggested strategies include:
 - ▣ Street outreach and case management for young people at high risk of involvement in violence;
 - ▣ Crisis response, advocacy and case management for victims;
 - ▣ Reentry programs for youth and young adults; and
 - ▣ Services for young children exposed to trauma and violence

Oakland Unite

5

- The Human Services Department (HSD) implements these efforts via the *Oakland Unite* (OU) violence prevention programs (VPPs)
- HSD, in consultation with the Measure Y/Z Oversight Committee and City Council's Public Safety Committee
 - ▣ Develop triennial funding strategies for services that align with legislation and meet City's shifting needs
 - ▣ Administer and monitor grants to community organizations to provide services

6 Oakland Unite Evaluation Overview

Prior Evaluation Efforts & Key Findings

Evolution of Oakland Unite Evaluation

7

Evaluation of all programs and strategies

- To what extent is each Measure Y program or strategy achieving its intended outcomes?

Crime and recidivism-focus

- Are Measure Y programs and strategies reducing recidivism and justice system-contact?

Recommendations for program refinement

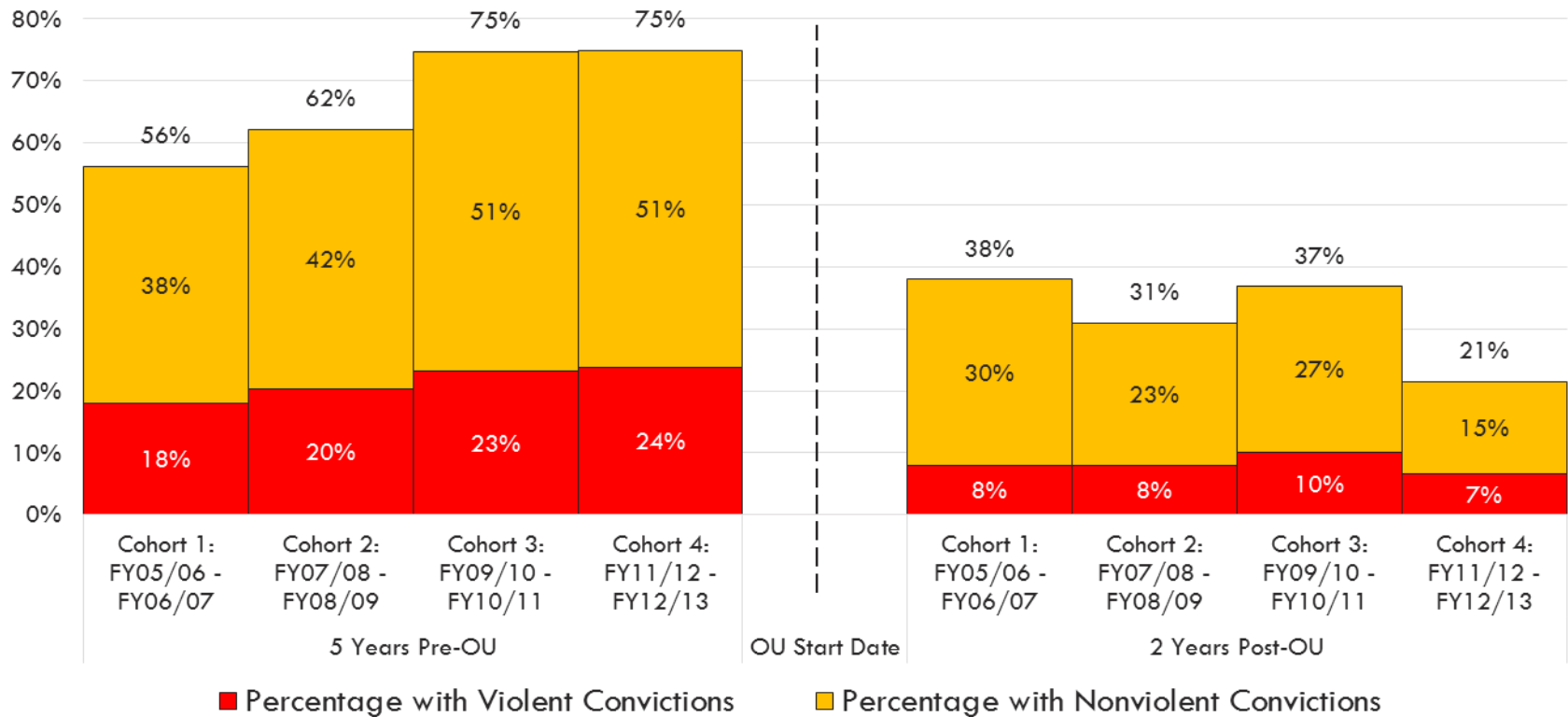
- How can Measure Y programs be strengthened to better align with community's needs?

Integration of non-recidivism-focused programs

- How do strategies that do not directly target recidivism fit in Oakland Unite's violence prevention infrastructure?

Program Effectiveness: Recidivism Rates

Percentages of Participants with Violent and Nonviolent Convictions 5 Years Pre-OU and 2 Years Post-OU, by Cohort

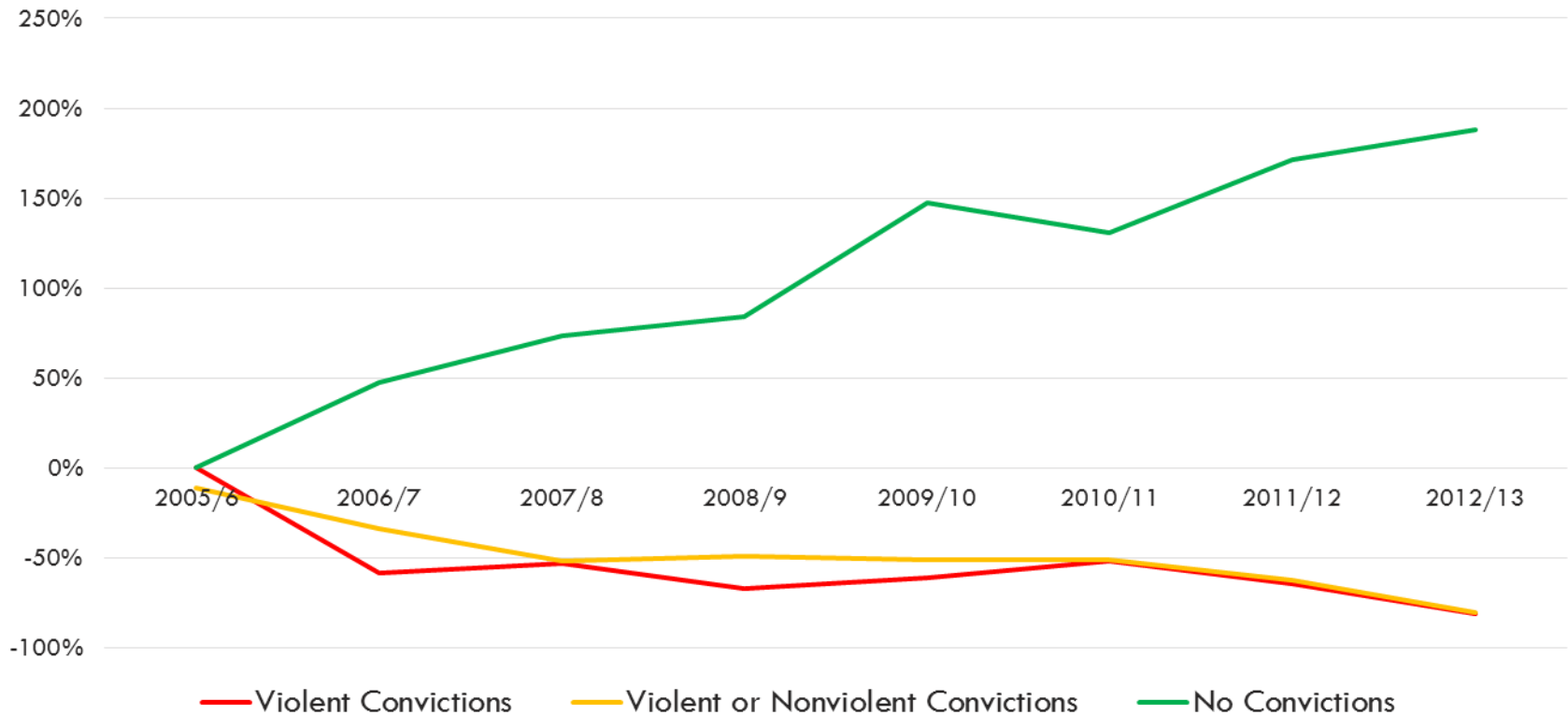


Program Effectiveness: Justice System Impact

9

How does OU effectiveness change? How does participation impact justice involvement?

Percent Difference between Rates of Conviction
2 Years Post-OU and 5 Years Pre-OU, by Fiscal Year



Best Practice Research to Improve Service Delivery

10

Case
Management
Practices

Job Training
and
Placement

Target
Population

Partnerships
and
Coordination

Overview of recommendations

11

Short-term

- Provide or fund training in evidence-based and promising practices
- Increase collaboration with existing partners

Long-term

- Build new partnerships to improve service delivery infrastructure
- Focus on job development

12

Evaluation Findings and Recommendations

Project Goal

To understand how interventions that do not directly target recidivism fit in Oakland Unite's violence prevention infrastructure

Crisis
Response
and
Support
Network

Family
Violence
Intervention
Unit

Peace in
the Parks

Restorative
Justice for
Oakland
Youth

Project Questions

14

1. How do strategies that do not directly target individuals involved in criminal/delinquent activities fit within the larger Oakland Unite framework?

2. How do these strategies support the goals and objectives of Measure Y and Measure Z?

3. How should these strategies be further integrated into the larger Oakland Unite and City's violence prevention infrastructure?

Violence Prevention Strategies

15

Crisis Response and Support Network

- Provide grief and trauma counseling and case management for families and friends of homicide victims

Family Violence Intervention Unit

- Provide domestic violence survivors with crisis support, safety planning, and legal assistance

Peace in the Parks

- Host family-friendly summer events in high crime neighborhoods

Restorative Justice for Oakland Youth

- Implement alternative approaches to punitive school discipline and juvenile justice policies

Key Findings

16

All four programs support the City's violence prevention goals

- Provide upstream support and resources
- Break the cycle of intergenerational and community violence

CRSN, PIP, & RJOY are integrated into the larger Oakland Unite violence prevention infrastructure

- Collaborate with Oakland Unite providers
- Connect to programs working with at-risk individuals

FVIU's focus on victims and survivors of violent crime has limited their integration into the larger violence prevention infrastructure

- Focus on victims and survivors
- Partner closely with law enforcement

Recommendations

17

Enhance FVIU's integration into Oakland Unite violence prevention infrastructure

- Have FVIU lead trainings to other Oakland Unite providers to raise awareness of domestic violence and availability of services
- Leverage existing youth programs to raise awareness of partner and family violence to increase understanding of the interconnection between home and street violence

Strengthen relationships between service and law enforcement-based violence prevention efforts

- Integrate RJOY's expertise and restorative justice approaches to create more partnerships across the City's violence prevention delivery

Thank you!

For questions/additional comments:

Patricia Marrone Bennett, PhD

pbennett@resourcedevelopment.net

510.488.4345 x105

Mikaela Rabinowitz, PhD

mrabinowitz@resourcedevelopment.net

510.488.4345 x114